



Gold-Fold Plus

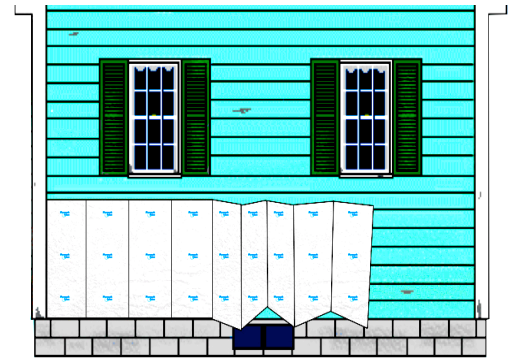
Siding Insulation



Gold-Fold Plus is a fan fold siding product for retro-fits or new construction. This fast to install system comes with a 2 sided, high barrier facer that protects against many types of chemicals. Made with moisture-resistant closed-cell EPS (expanded polystyrene), Gold-Fold is a tough product that holds its R-value and is resistant to bacteria, fungus, rot, mold and mildew.

Gold-Fold is fast to install and offers a stable r-value, dimensional stability, excellent water resistance and compressive strength properties. Facers can be clear or reflective.

- **2 Square bundles (1/4", 3/8" and 1/2")**
- **Rapid Installation**
- **Great for retro-fit applications**
- **No off-gassing**
- **Light-weight, high strength**



Gold-Fold Plus EPS Properties

Thickness	R-Value @ 40° F	R-Value @ 75° F	PSI CR @ 10%
.75"	3.19	2.94	13.0
.5"	2.13	1.96	13.0
.375"	1.59	1.47	13.0
.25	1.06	.98	13.0



Availability

- 2' x 50' 2 square bundle
- 2' x 48' nominal 2 square bundle
- * .75" - 1 square bundles only

Contact

John Calkins 920-889-0021 jcedisonassc@yahoo.com

This brochure is printed by JC Edison & Associates for promotional use only. Check Plymouth Foam's website for additional information.

Plymouth Foam
1800 Sunset Dr.
Plymouth, WI 53073
920-889-0021
800-669-1176